

## **Oil Baron Game Information**

The objective of Oil Baron is to amass the largest possible amount of wealth by creating companies and trading their stock. You may compete against another human player or play against the computer.

For help on playing Oil Baron, select from the topics below:

[Basic Rules for Play](#)

[The Game Menu](#)

[The Options Menu](#)

[The Window Menu](#)

[The Button Bar](#)

[The Mouse Commands](#)

[The Keyboard Commands](#)

[Notes on Oil Baron](#)

[Registration Blank](#)

Oil Baron v1.1, Copyr. 1992 Al Funk. This is a shareware program; unregistered usage of this game is permitted for evaluation purposes only. See Notes for more information.

## Registration Blank

To register Oil Baron, print this help page and send the following form to the address listed at the end:

-----  
Oil Baron Registration Version 1.1

Name : \_\_\_\_\_  
Cmpy.: \_\_\_\_\_  
Addr1: \_\_\_\_\_  
Addr2: \_\_\_\_\_  
City : \_\_\_\_\_ State: \_\_\_\_ Zip: \_\_\_\_\_  
Phone No. (optional) (    ) - \_\_\_\_\_ - \_\_\_\_\_

Computer Make: \_\_\_\_\_ Model : \_\_\_\_\_  
Processor : \_\_\_\_\_ Memory: \_\_\_\_\_  
DOS version : \_\_\_\_\_

Name, as will appear in registration box:

Name: \_\_\_\_\_

Address, as will appear in registration box:

Adr.: \_\_\_\_\_

Other Comments : \_\_\_\_\_  
\_\_\_\_\_  
\_\_\_\_\_

CIS ID, if any : \_\_\_\_\_

# copies : \_\_\_\_\_ @ \$10-- ea. = \$ \_\_\_\_.

(OR)

Unlimited copies allowed for \$ 40.00

total = \$ \_\_\_\_.

To be paid by check, certified check to:

Al Funk  
42 Parkwyn Dr.  
Delmar, NY 12054

## Rules for Play

Game action in each player's turn is broken down into two segments. In the first segment, the player has the option to place a piece or discard one. If a piece is played, it appears on the board either as an independent company (i.e., it has no insignia) or as a piece of a larger company.

If a piece is placed next to another independent piece, a new company is created. The creating player has the option to choose any of the listed companies. A company may not be created if it is already on the board. In addition, no more than eight companies may coexist. Therefore, pieces which create a 9th company will be darkened. These darkened pieces may be discarded but not played. If it is possible in the future to create a new company, the pieces will no longer be darkened.

If the piece placed is adjacent (horizontally or vertically) to another already created company, the piece will take on that company's insignia and add to the size and value of the company.

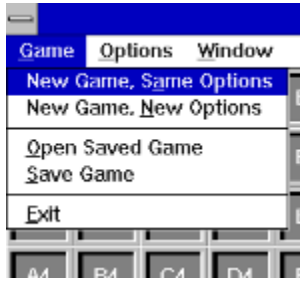
If the piece played links two companies (not along the diagonal, however) a merger is said to take place. When a merger occurs, the larger of the two companies (by share price) will remain and the smaller will disappear from the board. The individuals with the largest number of shares in the company will be paid a merger bonus in cash (some companies will give larger bonuses than others, however). All shareholders will have the choice to sell, trade, or hold their shares in the company. Trades are made 2 blocks of the dead chain's stock for 1 block of the new chain. If a player chooses to hold his shares, he will own however many he decided to keep if that company is re-created. Shares in an inactive company are not sellable and do not give dividends until that company is re-created. NOTE: Share holding limits are not observed when players trade shares 1-2 in a company. However, a company over its limit will not offer more shares and if excess shares are sold in the company they may not be bought back.

After placing, players may buy or sell shares in the companies existing on the board. There may or may not be limits on the number of shares which may be purchased in a given company according to the game options chosen.

The game ends when either: a) one company dominates the board and no new companies can be created or b) all pieces have been drawn for a number of rounds equal to half the number of chits allotted to each player. The player with the largest worth at the end of the game is the winner.

### Comparison of Companies

## The Game Menu



The Game Menu allows you to start a new game, save the current game, or load a previously begun game.

If you wish to customize your play options, choose New Game New Options. If you wish to play with the currently selected options, select New Game Same Options. Options you can change with the new options selection include the size of the playing board, share limits, and starting cash. If you choose to keep the same options you will still have the chance to customize the player list.

To save a game, choose Save Game from the Game Menu. The Game will be saved at the current point in play. Saving the game is a useful method for evaluating strategies.

To load a previous game, choose Open Game. The current game will be lost and your previous game will be restored and you may begin playing at the point you saved it. Note that version 1.1 will load games from version 1.0, but version 1.0 will not play games from version 1.1.

### [Choosing Game Play Options](#)

### [Customize Players](#)

### [Open Game](#)

### [Save Game](#)

## Choose Game Play Options

The following options may be changed on the Options dialog:

**Number of Chits:** Changing this number will change the number of pieces you have in your hand at any given moment. The minimum number of chits allowed is 4, the maximum 14. Recommended figures for this are between 5 and 11. This number should be modified in proportion to the size of your playing grid.

**Columns/Rows:** You can change the horizontal and vertical size of the playing grid by modifying this selection. The maximum number of columns and rows is 26, the minimum 12. Recommended sizes range from 12x12 to 18x20. Different sizes may be more or less legible depending on the graphics of your computer.

**Starting Cash:** This selection modifies the amount of money each player begins the game with. A larger number reduces the amount of luck in the early stages of the game because initial company creation is not as significant a source of income. However, it is important to balance out share limits with starting cash as small share limits and large starting cash amounts can make for a volatile game.

**Share Limit:** The minimum share limit is 500, the maximum 10,000,000. The share limit is the maximum number of shares that may be purchased in a company. However, it is possible to exceed this number by trading into a company.

**Blanks:** If blanks are permitted, some blank pieces will be mixed in with the normal draw. If a player receives a blank piece, he may place it in any unoccupied square he chooses. The piece corresponding to that square will be eliminated and the player with that piece will draw another.

**Pay Dividends:** The Pay Dividends check box determines whether companies offer dividends. Each company gives out dividends in proportion to the cost of its stock. These dividends give players a bit of extra cash without the need to sell shares. The dividends from Imperial and Colored Cube are higher in proportion to their share value than are the other six. In last six, share dividends are an identical proportion of their share value. Thus it may be helpful sometimes to invest in these two companies, as their dividend returns are high. This selection has a minimal effect on the overall outcome of games.

**Randomize Dividends:** When this selection is checked, dividends for each new company are determined randomly within a range loosely correlated with the standard setup.

**Randomize Share Costs:** Company share costs are determined on creation, and are determined randomly within a range loosely based on the standard setup.

**Hide Pieces on Play:** This is also changeable from the Options menu. Selecting this option makes the computer hide your pieces after you have placed. This is useful in human multi-player games in order that the other player(s) will not see your pieces but can watch share purchases. Note that piece visibility can be toggled whether or not this selection is on.

### The Game Menu

## **War Room Display**

The War Room selection automatically displays and arranges Oil Baron's information windows, making it easier to see the current status of the game.

## **The Window Menu**

The Window menu is used to view one of the three statistics displays: the information box, the wealth bar graph, or the shareholdings graph.

[Information Box](#)

[Wealth Bar Graph](#)

[Shareholdings Graph](#)

[War Room](#)

## Information Box

The Info... dialog allows the viewing of the share holdings and total wealth of each player on the board. It is crucial to monitor this board in order to see who has majorities in which companies and in which companies all the shares have been bought up. In addition, it gives some insight into the strategies of the other players. Use the mouse or keyboard to select the company to view and stock counts and total values will be adjusted accordingly. Hit <Enter> to exit this display.



## **The Wealth Bar Graph**

The Wealth Bar Graph displays in visual format the relative positions of players during the game. Next to the bar representation, the actual wealth figures are displayed. This window remains in the front of the display at all times.

## **The Button Bar**

The Button Bar allows the quick selection of menu choices. Each button's function can also be emulated from the keyboard. See the following for more information:

[Ending Your Turn](#)

[Discarding Pieces](#)

[Buying and Selling Shares](#)

[Hiding Your Chits](#)

[The Shareholdings Graph](#)

## Using the Mouse

It is easiest to play Oil Baron using the mouse. The button bar provides an easy way to select options during play.

In addition to the button bar, the mouse can be used to drag pieces, instantly place pieces, and select companies from which to buy or sell.

To drag a piece, simply point to that piece, hold the left button, drag it to its square, and release the button. This is the easiest way to place blanks in particular.

To instantly place a piece, double click on the piece and it will place itself.

To buy or sell shares in a company, double click on any one of the company's pieces in the grid and you will see the buy/sell dialog box. It is also possible to double click on the icons on the right side of the screen.

For more information, see the following:

[Buying and Selling Shares](#)

[Rules for Play](#)

[Using the Keyboard](#)

## Using the Keyboard

Although it is easiest to play Oil Baron with the mouse, anything that can be done with the mouse can also be done from the keyboard. For instance, all button bar commands can be selected either from the Options menu or from hotkeys identified on the buttons and the menu.

To operate (move/resize/change options) graph and wealth window displays from the keyboard:

- 1) Select the window from the Window menu
- 2) When finished, press TAB to return to the main menu.

In addition to the above, all dialog boxes are fully operable from the keyboard.

Main window hotkeys are as follows:

| <u>Key Combination</u> | <u>Function</u> |
|------------------------|-----------------|
| Alt + B                | Buy/Sell        |
| Alt + D                | Discard Chit    |
| Alt + I                | Hide/View Chits |
| Alt + P                | Place Piece     |
| Alt + N                | See Information |

For more information, see:

[Mouse Commands](#)

[Button Bar](#)

## Select Players

Whenever a new game is started you are presented with a dialog allowing you to enter the names and status of all players. If you did not select new options, you may also return to a game in progress by hitting 'Cancel'.

Type the names of each player and the fictional names of computer players into the boxes on the left. Then, select the status of each player on the right. Choosing 'human' allows you to play the game yourself. Choosing either kind of computer player will make the computer play against you.

The two computer options, dumb and smart, allow you to set the difficulty of the game which you are playing. A dumb computer will be more likely to underestimate the importance of a move or buy the incorrect stock. However, do not underestimate the intelligence of even the dumb computer players.

Computer players will move and trade stock nearly instantaneously. Be sure to check the board and the game information before proceeding with your own turn.

## Buying and Selling Shares

To buy or sell shares, either hit Alt + B, click the buy/sell button on the button bar, double-click on a unit in the company you wish to select, or choose the appropriate menu selection.

First, make sure that the company you wish to choose is selected in the pull-down list on the top of the dialog. The buy/sell dialog will now show you how many shares you can buy. If you choose to sell, click on the 'sell' button and the number of shares you can sell will appear. You may adjust this number either by typing in a new choice or clicking on the + and - buttons.

To finalize the purchase or sale, click on OK. To exit without buying or selling shares, click on Cancel or hit Escape.

It is possible that you will not be able to buy enough shares in a company to deplete your cash. Check and see if the company's shares have all been bought up if you have chosen a share limit. If so, purchase shares in another company. Remember: spare cash does not earn dividends.

## Discarding Pieces

If you find that you cannot place all of your pieces, or they all will help other players, you do not have to place any of them. Instead, you can discard. To discard, either hit Alt + D or click on the discard button on the button bar.

Discarding removes that piece from play. If you have selected 'show discarded pieces' from the Options menu, your discarded piece will appear as an X on the appropriate square.

A blank may be placed in a square whose piece has been discarded.

## **Ending Your Turn**

Anytime after you have placed your piece you have the option to end your turn. When you end your turn, your dividends are calculated and it is the next player's chance to place.

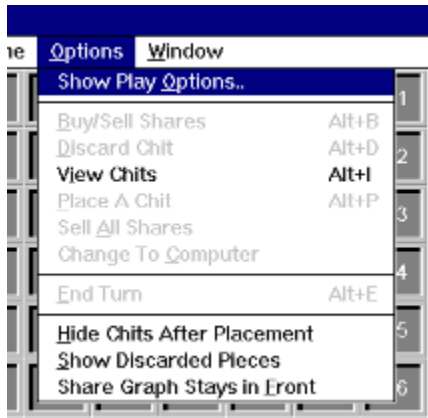
To end your turn, either type Alt + E or select 'End Turn' from the button bar.



## **Hiding Your Chits**

If you are playing with another person it is best to select 'hide chits on play' from either the options dialog or the Options menu. This selection clears your chit display after you have placed, allowing the other player to watch the rest of your turn and concealing your pieces from view.

## The Options Menu



The options menu allows you to execute commands from the keyboard as well as viewing and changing play options.

Choose 'Show Play Options' to see which options are in effect for the current game.

**Sell All Shares:** If you choose this option, the computer will sell all of your holdings. You may then use that cash to buy as you wish. You may also use the buy/sell dialog to sell shares from individual companies.

Note that the menu bar changes during computer turns. The Options menu is a subset of ordinarily accessible features.

For more information on specific options, see the following:

[Buying and Selling Shares](#)

[Hiding Your Chits](#)

[Ending Your Turn](#)

[Discarding Pieces](#)

[Using the Share Graph](#)

[Change To Computer](#)

[Using Options Menu During Computer Turns](#)

## Company Comparison

There are eight companies in the world of Oil Baron: Imperial, Colored Cube, Arabian, American, Pyramid, SupraCo, Weemoco, and Purple. They are divided into three groups each of which has certain different characteristics. Learning which companies to create and invest in when is the focus of strategy in Oil Baron.

| <u>Company</u>          | Starting Value/Shr | \$ Gain Potential | Holders' Bonus |
|-------------------------|--------------------|-------------------|----------------|
| Imperial, Colored Cube  | 40.00              | Low               | High           |
| Arabian,American,Pyrmd. | 20.00              | Medium            | Medium         |
| SupraCo,Weem,Purple     | 7.50               | High              | Low            |

Also note that different companies have different maximum share values, which is crucial in determining which company or companies will dominate the board at the end of the game.

Company insignia:



Imperial Oil & Gas



Colored Cube Oil Co.



American Natural Gas Co



Arabian Oil Co.



Pyramid Oil Co.



SupraCo Fuel Resources



Weem Oil Refining



Purple Oil Company

## Notes on Oil Baron: Version 1.1

PLEASE SUPPORT THE SHAREWARE CONCEPT.

Oil Baron was designed by Al Funk, Copyright 1992. It is a shareware product. To obtain a registration code for Oil Baron, please send \$10 to:

Al Funk  
42 Parkwyn Dr.  
Delmar, NY 12054

See the registration blank option at the end of Notes for easy registration. Send checks only, please. For an on-disk copy of the most recent version, please send an additional \$2.50. Registration will provide a code valid for all future versions, as well as guaranteed notification of available updates. Future updates will include such improvements as computer players who can play blanks, smarter computer players, more game play options, and bug-fixes (if necessary). Updates may also incorporate player suggestions.

The author may be contacted at the above address by mail, at CompuServe account 71505,1277, or America Online user name 'Alfunk'. Product support is guaranteed to registered users.

This program is intended to be run on Windows 3.1 or greater, on a computer with 150k free memory and a VGA or super-VGA adapter. Use on other system configurations may produce some minor aberrations (for example, odd colors on EGA cards).

DISCLAIMER: No warranties are expressed or implied as to performance or merchantability. The user of this program must assume the entire risk of using the program. Any liability of the author is limited exclusively to replacement or refund of the purchase price.

Oil Baron was programmed in Turbo Pascal for Windows v1.5 Copyright Borland under Windows 3.1 Copyright Microsoft.

[Update Information](#)

[Registration Blank](#)

## Update Information

Version 1.1 of Oil Baron includes the following enhancements, among others:

- + More intelligent computer players
- + A wealth display window
- + Automatic "War Room" window configuration
- + Enhanced Button Bar
- + Enhanced Keyboard and Mouse Support
- + Improved share disposition options on merger (when keeping shares)
- + Random Share and Dividend Options

Many thanks to those users whose suggestions helped make Oil Baron an even better game!

Oil Baron is a shareware product, Copyr. 1992 by Al Funk. See Notes for more information.

## Using the Shareholding Graph

The shareholding graph allows the players to view the distribution of shares by company.

This share information may be displayed either by the number of shares held or in percentages of company ownership. The graph may be left up while the game is played to make references to the Information dialog less necessary.

## Options Menu During Computer Turns

During a computer player's turn, it is possible to access a subset of the options menu. The Info, Show Graph, and Show Play Options selections are the same as on the human player menu. Note that the Info and Show Play Options dialogs will halt the thinking of the computer.

It is possible to change a computer player into a human player by choosing the Change To Human option on the Options menu. A computer player turned into a human player will be accessible on its next turn.

## **Change To Computer**

This options selection is only available before a move for this turn has been made. It allows the current player to be changed into a Smart computer player. See Options Menu During Computer Turns for the reverse selection (available during that computer player's turn on the options menu).

[Options Menu During Computer Turns](#)



## **Open Game**

The open game feature allows the continuation of a previously saved game.

Simply select the Oil Baron game you wish to continue from the list.

[Save Game](#)

## **Save Game**

The save game feature allows the recording of a current game. Simply type in the name under which you would like to record the game. When you wish to continue the game, choose 'Open Game'.

[Open Game](#)

